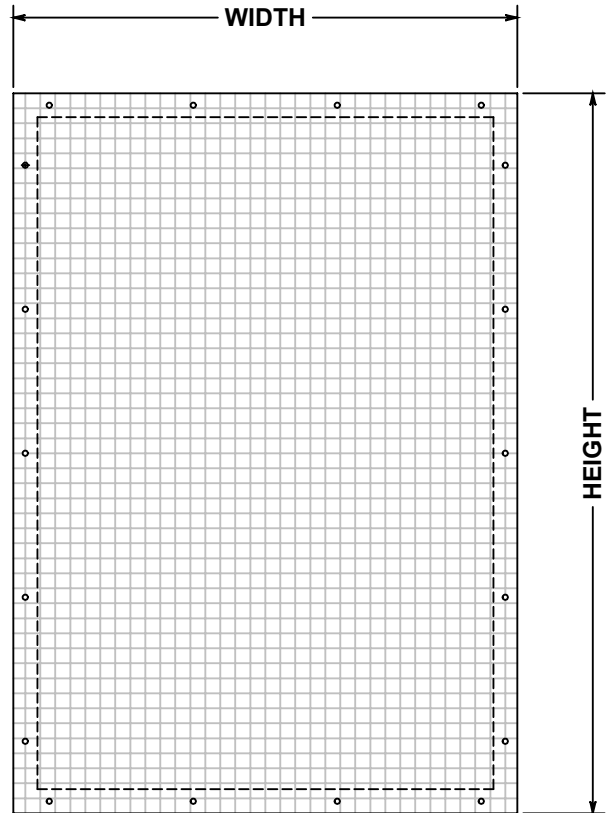


① MESH W/ FLATBAR IN FRONT
SCALE: NTS



② MESH W/ FLATBAR IN REAR
SCALE: NTS

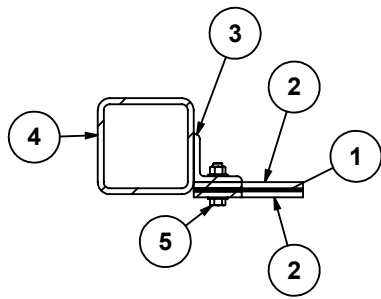
FLAT BAR FRAMED PANELS - ELEVATION

NOT TO SCALE

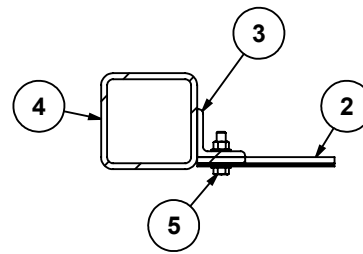


CAMBRIDGE ARCHITECTURAL MESH
 105 GOODWILL RD. | CAMBRIDGE, MD 21613
 TOLL FREE: 866-806-2385
 WWW.CAMBRIDGEARCHITECTURAL.COM

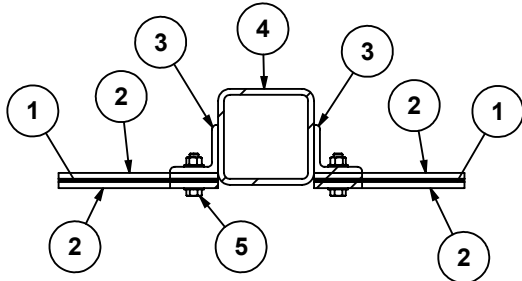
WARNING:
 DETAILS ABOVE ARE TYPICAL ONLY AND ARE BASED ON THE MATERIALS AND PROPERTIES OF EACH COMPONENT AS MANUFACTURED OR FABRICATED BY CAMBRIDGE ARCHITECTURAL MESH. ANY SUBSTITUTIONS MAY RESULT IN THE FAILURE OF THE SYSTEM. ANY DEVIATION FROM THE STANDARD SIZES OR MATERIALS ABOVE SHOULD BE RECONFIGURED WITH THE MANUFACTURER PRIOR TO SPECIFICATION.



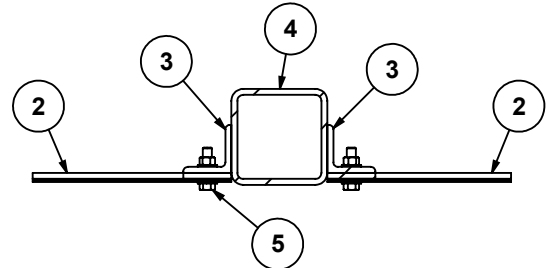
1 DOUBLE FLAT BAR
SCALE: NTS



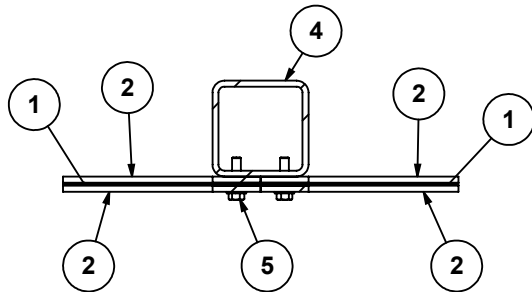
4 REAR FLAT BAR
SCALE: NTS



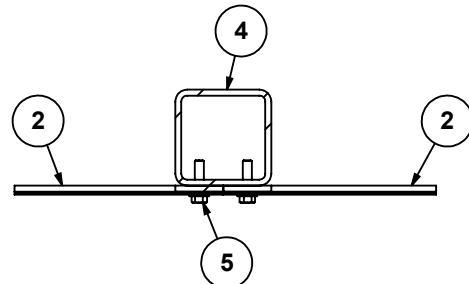
2 DOUBLE FLAT BAR
SCALE: NTS



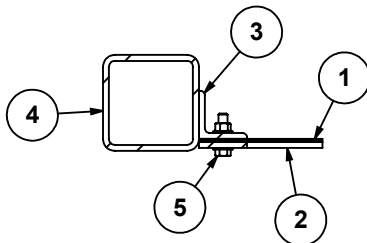
5 REAR FLAT BAR
SCALE: NTS



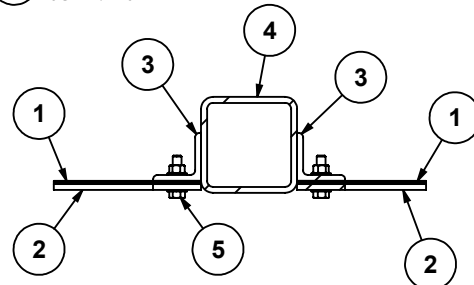
3 DOUBLE FLAT BAR
SCALE: NTS



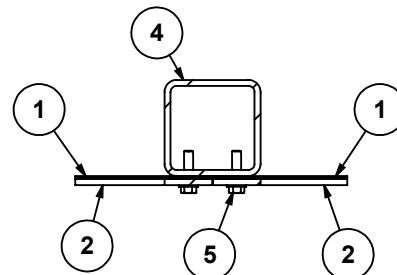
6 REAR FLAT BAR
SCALE: NTS



7 FRONT FLAT BAR
SCALE: NTS



8 FRONT FLAT BAR
SCALE: NTS



9 FRONT FLAT BAR
SCALE: NTS

KEYNOTES:

1. CAMBRIDGE MESH (SS)
2. 2" X 1/4" FLAT BAR (SS)
3. 2" X 2" 1/4" ANGLE (SS)
4. STRUCTURE (BY OTHERS)
5. 3/8" HARDWARE (SS)

FLAT BAR FRAMED PANELS - ATTACHMENT

NOT TO SCALE



CAMBRIDGE ARCHITECTURAL MESH
 105 GOODWILL RD. | CAMBRIDGE, MD 21613
 TOLL FREE: 866-806-2385
 WWW.CAMBRIDGEARCHITECTURAL.COM

WARNING:
 DETAILS ABOVE ARE TYPICAL ONLY AND ARE BASED ON THE MATERIALS AND PROPERTIES OF EACH COMPONENT AS MANUFACTURED OR FABRICATED BY CAMBRIDGE ARCHITECTURAL MESH. ANY SUBSTITUTIONS MAY RESULT IN THE FAILURE OF THE SYSTEM. ANY DEVIATION FROM THE STANDARD SIZES OR MATERIALS ABOVE SHOULD BE RECONFIGURED WITH THE MANUFACTURER PRIOR TO SPECIFICATION.