

A select portfolio of metal mesh installations for multi-family projects

Capabilities

Aesthetic Designs
Facades/Solar Shading
Graphics

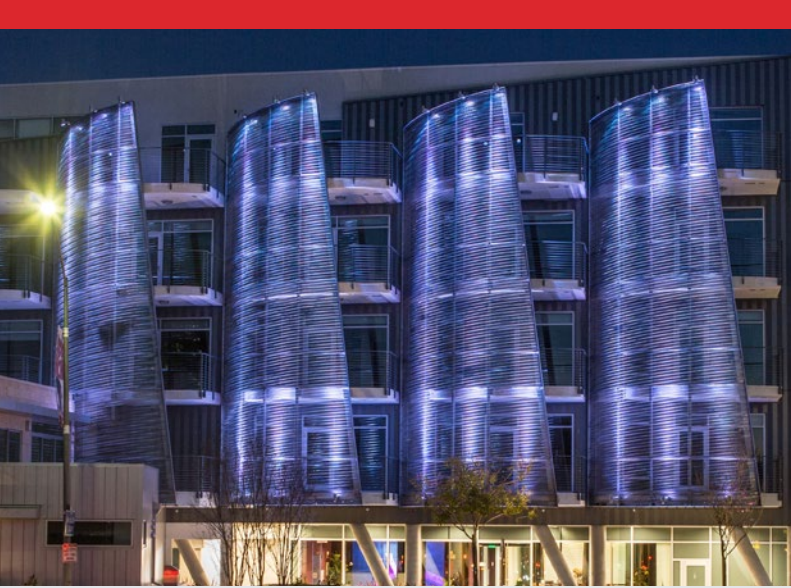
For more information

David Zeitlin, Business Director

[CONTACT US](#)

1.866.806.2385 sales@cambridgearchitectural.com

[Click on any headline to learn more.](#)



Thornton Flats, Austin

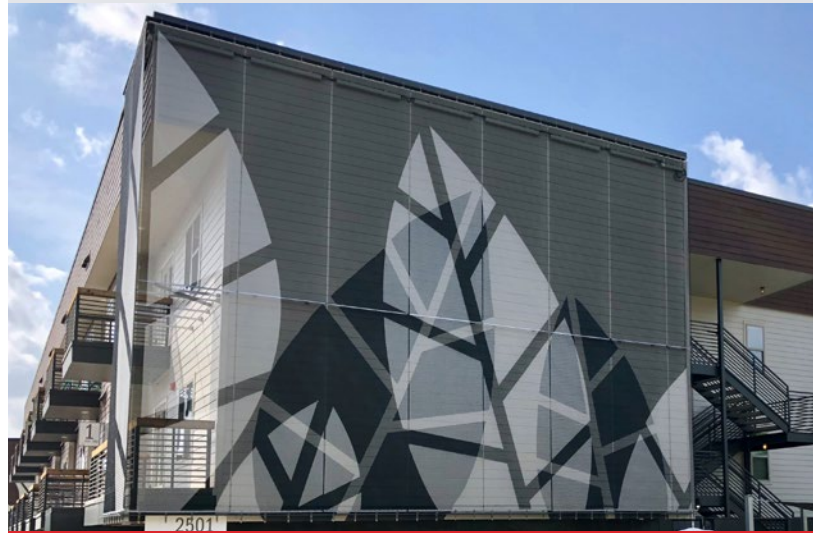
A metal mesh leaf pattern accentuates a luxury apartment building in South Austin to create a sense of distinction and presence. Leaf “cut-outs” in stainless steel were created by powder-coating surrounding metal in antique bronze. A tan wall behind the 50-percent-opacity mesh creates a 3D-like effect.

“PSW had never used metal mesh before. Cambridge was awesome in helping us traverse the uncharted territory on this project. We really liked the translucent layering design opportunities the mesh screen offered as well as the long-term durability of powder-coated stainless steel.”

Andy Webre, Architectural Project Manager, PSW Homes

Mesh Pattern: Mid Balance

Attachment System: Eyebolt



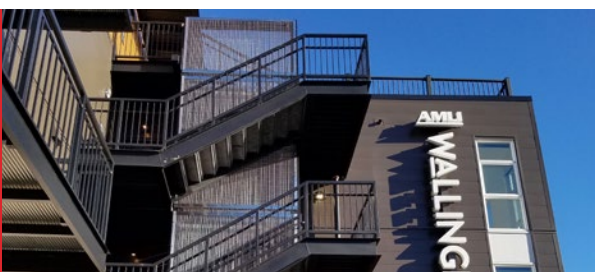
VINZ on Fairfax, Los Angeles

Creating a bold aesthetic feature, five metal mesh sails span vertically across four levels of boutique apartment balconies. LED lights affixed to the top of the frames wash the sails in color at night in this ultra stylish community.

“The Cambridge metal mesh proved to satisfy the high-performance and aesthetic standards for our project, while fitting within our client’s budget. The porosity of the mesh adds some privacy to the exterior balconies, while allowing view and light through for occupants. It also helps cut out some of the less desirable low angle sunlight for the residential windows and balconies behind the mesh.”

Jack Feichtner, Associate Principal, Cuningham Group Architecture, Inc.

Mesh Patterns: Balance **Attachment System:** Eyebolt



AMLI Wallingford, Seattle

Seamlessly rising five stories from the lobby level to a glorious rooftop terrace, the metal mesh provides a stunning aesthetic punctuation mark for a high-end LEED Silver loft apartment building bordered by the Fremont and University districts.

Mesh Pattern: Chaos | **Attachment System:** Custom frame